

Dell C5518QT

Dell Display Manager

User's Guide

Model: C5518QT
Regulatory Model: C5518QTt





NOTE: A NOTE indicates important information that helps you make better use of your computer.

Copyright © 2017 Dell Inc. or its subsidiaries. All rights reserved. Dell, EMC, and other trademarks are trademarks of Dell Inc. or its subsidiaries. Other trademarks may be trademarks of their respective owners.

2017 – 05

Rev. A00

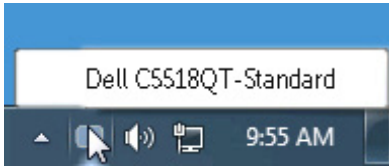
Contents


Overview	4
Using the Quick Settings Dialog	5
Setting Basic Display Functions.....	6
Assigning Preset Modes to Applications	7
Applying Energy Conservation Features	8
Organizing Windows with Easy Arrange	9
Troubleshooting	11

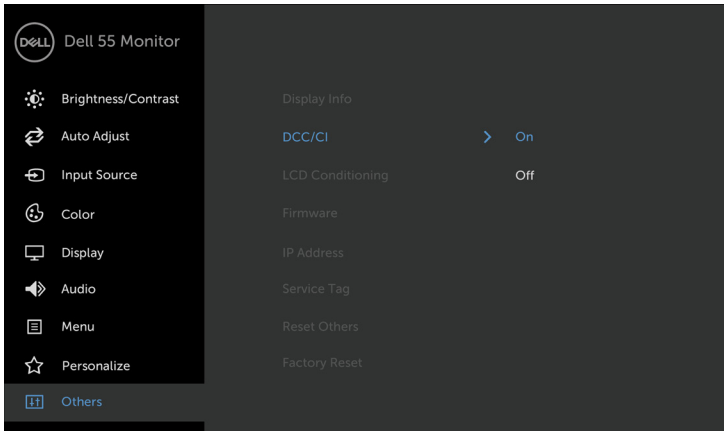


Overview

Dell Display Manager is a Windows application used to manage a display or a group of displays. It allows manual adjustment of the displayed image, assignment of automatic settings, energy management, window organization, image rotation, and other features on select Dell displays. Once installed, Dell display manager runs each time the computer starts and its icon is placed in the notification tray. Information about displays connected to the computer is displayed when you hover the mouse pointer over the notification tray icon.

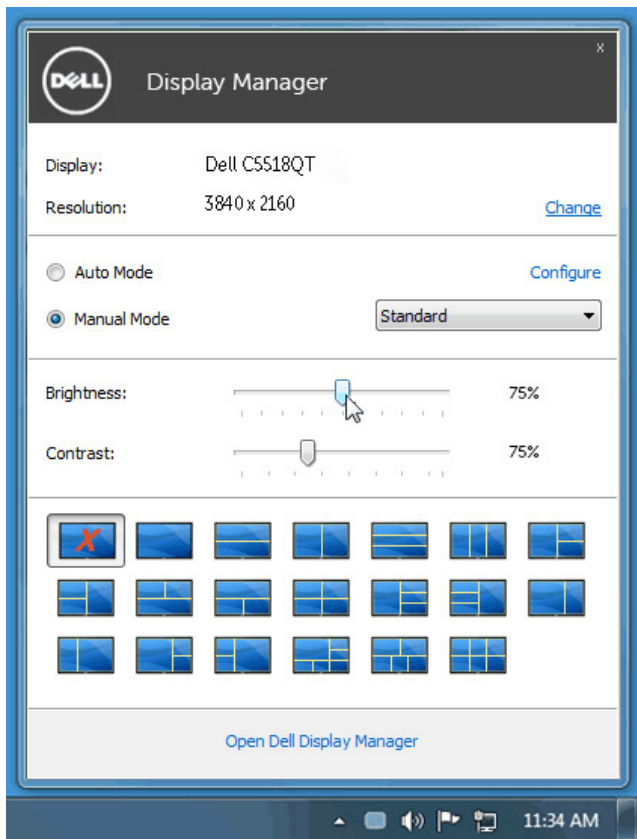


 **NOTE:** Dell Display Manager needs to use DDC/CI channel to communicate with your display. Please make sure DDC/CI is enabled in the menu as below.



Using the Quick Settings Dialog

Clicking Dell Display Manager's notification tray icon opens the **Quick Settings** dialog box. When more than one supported Dell model is connected to the system, a specific target display can be selected using the menu provided. The **Quick Settings** dialog box allows convenient adjustment of the display's brightness and contrast levels. You can manually select a preset mode or enable automatic selection of a preset mode depending on the active application.



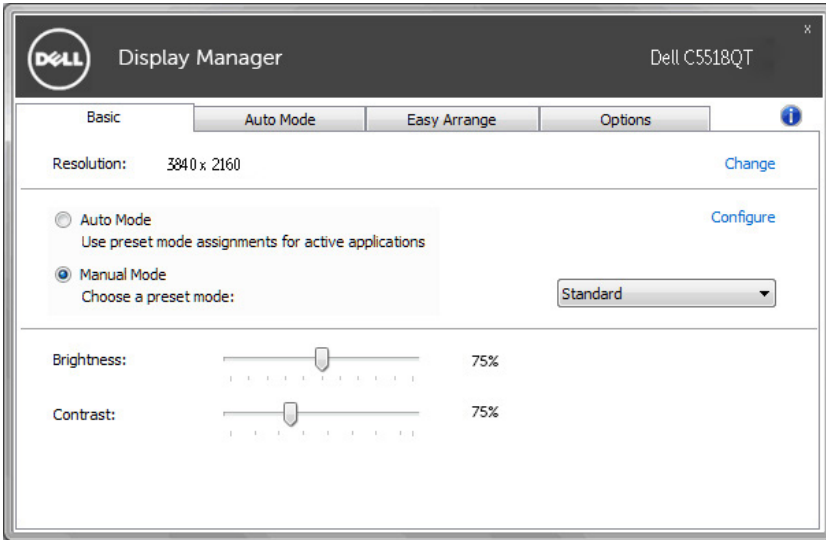
The Quick Settings dialog box also provides access to Dell display manager's advanced user interface, which is used to adjust basic functions, configure Auto Mode, and access other features.



Setting Basic Display Functions

A preset mode for the selected display can be manually applied using the menu on the **Basic** tab. Alternatively, Auto Mode can be enabled. Auto Mode causes your preferred preset mode to be applied automatically when specific applications are active. A message momentarily appears on the screen showing the selected preset mode.

The selected display's brightness and contrast can also be directly adjusted from the **Basic** tab.



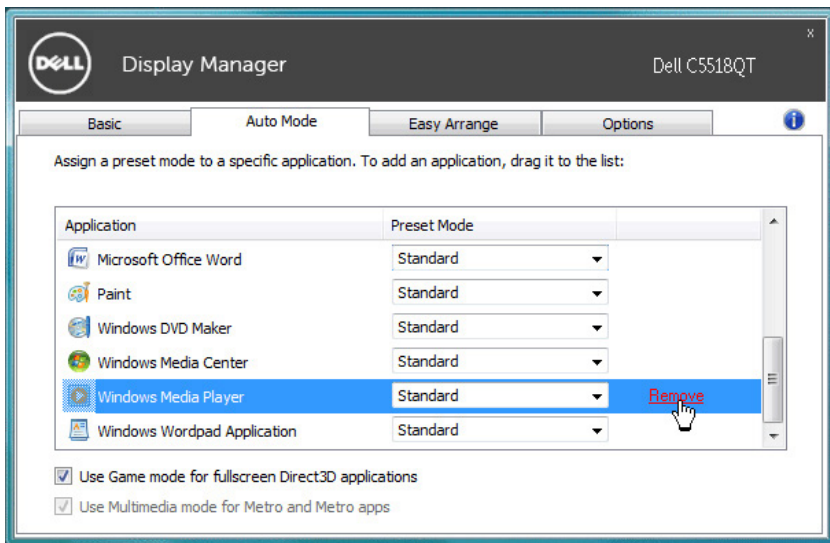
Assigning Preset Modes to Applications

The Auto Mode tab allows you to associate a specific preset mode with a specific application, and apply it automatically. When Auto Mode is enabled, Dell Display Manager automatically switches to the corresponding preset mode whenever the associated application is activated. The preset mode assigned to a particular application may be the same on each connected display, or it can vary from one display to the next.

Dell Display Manager is pre-configured for many popular applications. To add a new application to the assignment list, simply drag the application from the desktop, Windows Start Menu, or elsewhere, and drop it onto the current list.

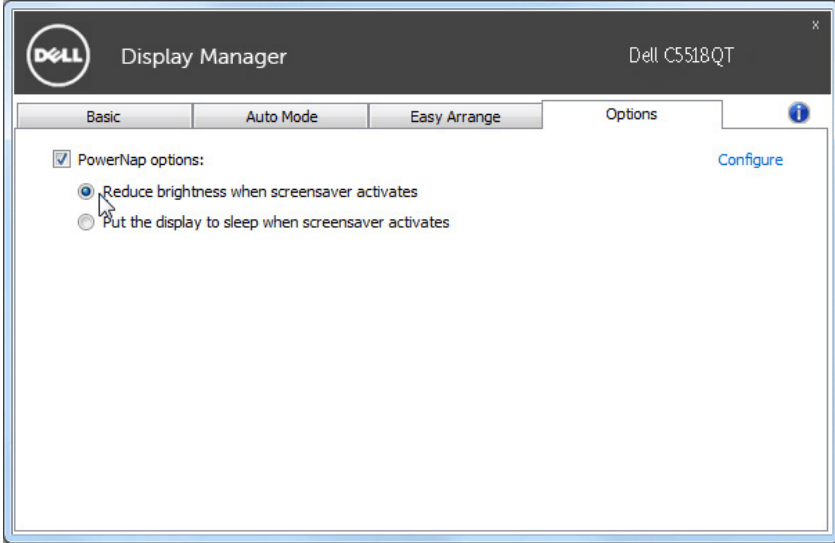
NOTE: Preset mode assignments targeting batch files, scripts, and loaders, as well as non-executable files such as zip archives or packed files, are not supported and will be ineffective.

In addition an option can be enabled that activates the Game preset mode when a Direct3D application is run in full-screen mode. To override this behavior for individual game titles, add them to the assignment list with a different Preset Mode. Applications present in the assignment list take priority over the general Direct3D setting.



Applying Energy Conservation Features

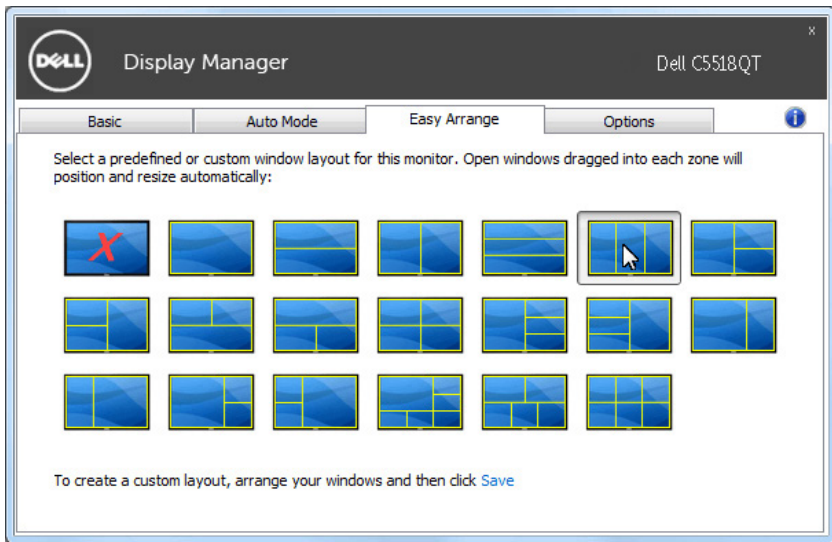
On supported Dell models, an **Options** tab is available to provide PowerNap energy conservation options. When the screensaver activates, the display's Brightness can automatically be set to minimum level or the display can be put to sleep in order to save additional power.



Organizing Windows with Easy Arrange

Some Dell models feature Easy Arrange, which allows the selected display's desktop to be organized into various predefined or custom window layouts. When Easy Arrange is enabled, windows can easily be repositioned and resized automatically to fill specific regions within a window layout.

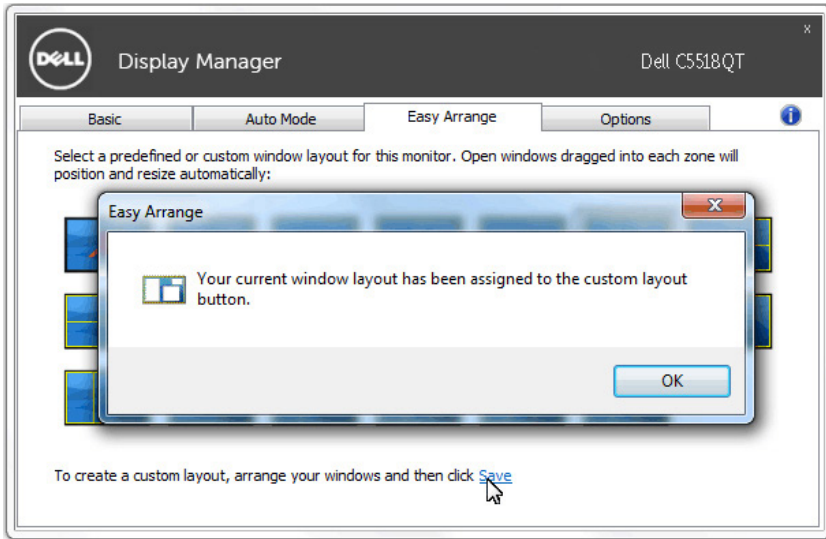
To get started with **Easy Arrange**, choose a target display and select one of the predefined layouts. The regions for that layout are displayed momentarily on the display. Next, drag an open window across the display. While the window is being dragged, the current window layout is displayed and an active region gets highlighted as the window passes over it. At any time, drop the window into the active region to place the window in that region.



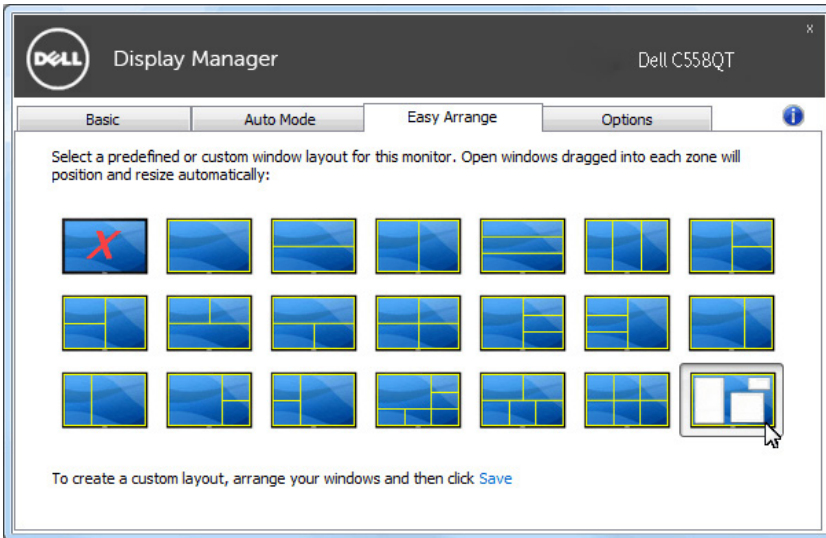
To create a custom window layout, size and position the windows (maximum 10) on the desktop and then click the Save link in **Easy Arrange**. The size and position of the windows is saved as a custom layout and the custom layout icon is created.

NOTE: This option does not save or remember the applications that are open. Only the size and position of the windows is saved.



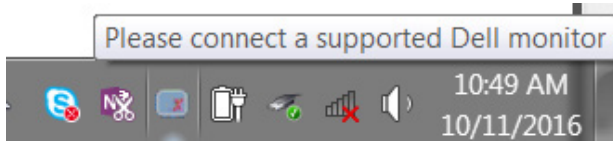


To use the custom layout, select the custom layout icon. To delete the currently saved custom layout, close all windows on the desktop and then click the **Save** link in **Easy Arrange**.

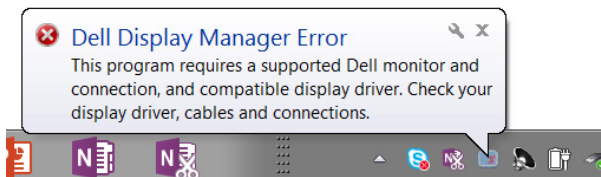


Troubleshooting

If DDM cannot work with your display, DDM will show below icon in your notification tray.



Click on the icon, DDM shows a more detailed error message.



Please note that DDM only works with Dell branded displays. If you are using displays from other manufacturers, DDM doesn't support them.

If DDM is unable to detect and/or communicate with a supported Dell display, please take below actions to troubleshoot:

1. Make sure the video cable is properly connected to your display and your PC, especially the connectors should be firmly inserted into position.
2. Check the display OSD to ensure DDC/CI is enabled.
3. Make sure you have the correct and latest display driver from the graphics vendor (Intel, AMD, NVidia, etc.). Display driver is often the cause of DDM failure.
4. Remove any docking stations or cable extenders or converters between the display and the graphics port. Some low-cost extenders, hubs or converters may not support DDC/CI properly and can fail DDM. Update the driver of such device if the latest version is available.
5. Restart your system.

DDM may not work with below displays:

- Dell display models earlier than year 2013 and D-series of Dell displays. You can refer to Dell Product Support websites for more information
- Gaming displays using Nvidia-based G-sync technology
- Virtual and wireless displays do not support DDC/CI



- Some early models of DP 1.2 displays, it may be necessary to disable MST/DP 1.2 using the display OSD

If your PC is connected to the Internet, you will be prompted with a message when a newer version of DDM application is available. It is recommended to download and install the latest DDM application.

You may also check for new version by right clicking on DDM icon while pressing and holding 'shift' key.

